

ALL-TERRAIN FORKLIFTS

Compact, powerful and versatile





1500 Kg

4

C150H



2000, 2500, 3500 Kg

6

C201H

C251H

C351H



5000 Kg

10

C501H

AUSAnow

12

Technical data

14

Dimensions

16

Equipment

18

ALL-TERRAIN FORKLIFT

1500 KG

AUSA's most compact all-terrain forklift. With its 1,500 kg payload and extremely small size, it has outstanding handling and versatility.

It is especially designed for labour-intensive work in the farming sector and in small-scale municipal works where small loads have to be moved.

The C150H is available with 4x4 and 4x2 drive, so there are options to meet every need.



C150H 1500KG
TRACTION 4x2 / 4x4 COMPEN®
POWER 18.5KW **WIDTH** 1300MM **TRANSMISSION** HYDROSTATIC



FEATURED EQUIPMENT

Tilting cab for easy access to the engine and components. **Ergonomic joystick** that controls the movements of the mast and the transmission. **Hydrostatic transmission** to ensure smooth and safe operation for the user. **Spacious driver's cab** for comfortable and safe handling. **Rotating beacon** that makes it more visible for people outside the vehicle.

ALL-TERRAIN FORKLIFT

2000 - 2500 - 3500 KG

The most advanced range of compact forklifts available on the market. These are powerful and robust models that are equipped with the latest technology to achieve the best off-road performance with minimal fuel consumption.

They are designed for medium-scale tasks in the construction and agricultural sectors, reaching their full potential on difficult terrains thanks to their sturdiness and high payload.

They also have a digital display in the driver's cab which provides all of the machine's real-time information, allowing you to run self-diagnostics without the need for any external tools.

FEATURED EQUIPMENT

Tilting cab for easy access to the engine and components. **Ergonomic joystick** that controls the movements of the mast and the transmission. **Steering wheel with adjustable** height and reach, for good operator comfort and safety. **Digital screen** with all of the information about the machine and self-diagnostics. **Limited-slip differential** on the front axle, which transmits the necessary amount of power to each individual wheel. **ECO Mode** to automatically regulate the RPM to ensure low consumption and reduced maintenance costs. **Seat belt with a buckle sensor** and seat with presence sensor to prevent the machine from being used without following the minimum safety procedures. **Negative brake** which is automatically engaged when the engine is turned off.





C201H 2000KG
TRACTION 4x2 / 4x4 FULLGRIP®
POWER 18.5KW WIDTH 1520MM TRANSMISSION HYDROSTATIC



C251H 2500KG
TRACTION 4x2 / 4x4 FULLGRIP®
POWER 31.2KW WIDTH 1520MM TRANSMISSION HYDROSTATIC



C351H 3500KG
TRACTION 4x4 FULLGRIP®
POWER 31.2KW WIDTH 1780MM TRANSMISSION HYDROSTATIC



C501H 5000KG
TRACTION 4x4 FULLGRIP®
POWER 55KW **WIDTH** 2010MM **TRANSMISSION** HYDROSTATIC



ALL-TERRAIN FORKLIFT

5000 KG

The C501H is AUSA's all-terrain forklift with the highest payload. Designed for large-scale work, especially in the construction sector and for moving large materials.

Its large payload contrasts with its small size, allowing it to maintain good manoeuvrability on difficult terrains.

They also have a digital display in the driver's cab which provides all of the machine's real-time information, allowing you to run self-diagnostics without the need for any external tools.

FEATURED EQUIPMENT

Tilting cab for easy access to the engine and components.
Ergonomic joystick that controls the movements of the mast and the transmission. **Steering wheel with adjustable** height and reach, for good operator comfort and safety. **Digital screen** with all of the information about the machine and self-diagnostics. **Limited-slip differential** on the front axle, which transmits the necessary amount of power to each individual wheel. **ECO Mode** to automatically regulate the RPM to ensure low consumption and reduced maintenance costs. **Seat belt with a buckle sensor and seat with presence sensor** to prevent the machine from being used without following the minimum safety procedures. **Negative brake** which is automatically engaged when the engine is turned off.

All AUSA forklifts can be equipped with AUSAnow, the software used to remotely control machines, providing you with all real-time information.



Control your fleet of machines

From your office or with your mobile phone. Control all of your AUSA machines in real time. With AUSAnow you can anticipate any faults and maintenance, to reduce downtime.



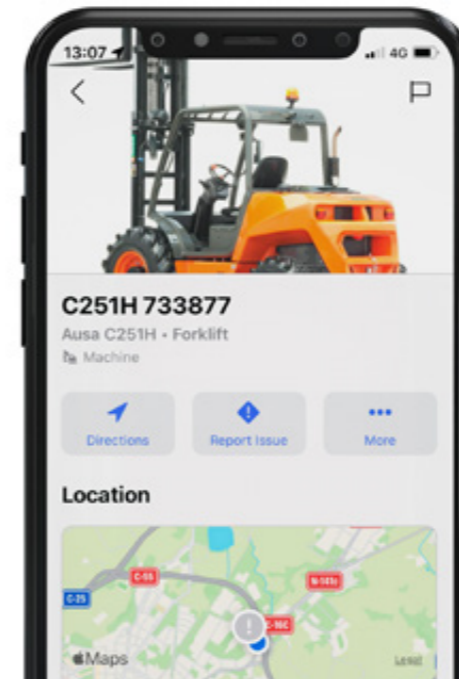
Get information and make decisions

View or create your own personalised charts to obtain in-depth information about the operation of your machines and make decisions that are based on analytical information.



Connect security alarms

Establish a schedule and security perimeter. If one of your machines is moved outside the established area, AUSAnow will alert you straight away so that you can deal with it.



Data, data and more data

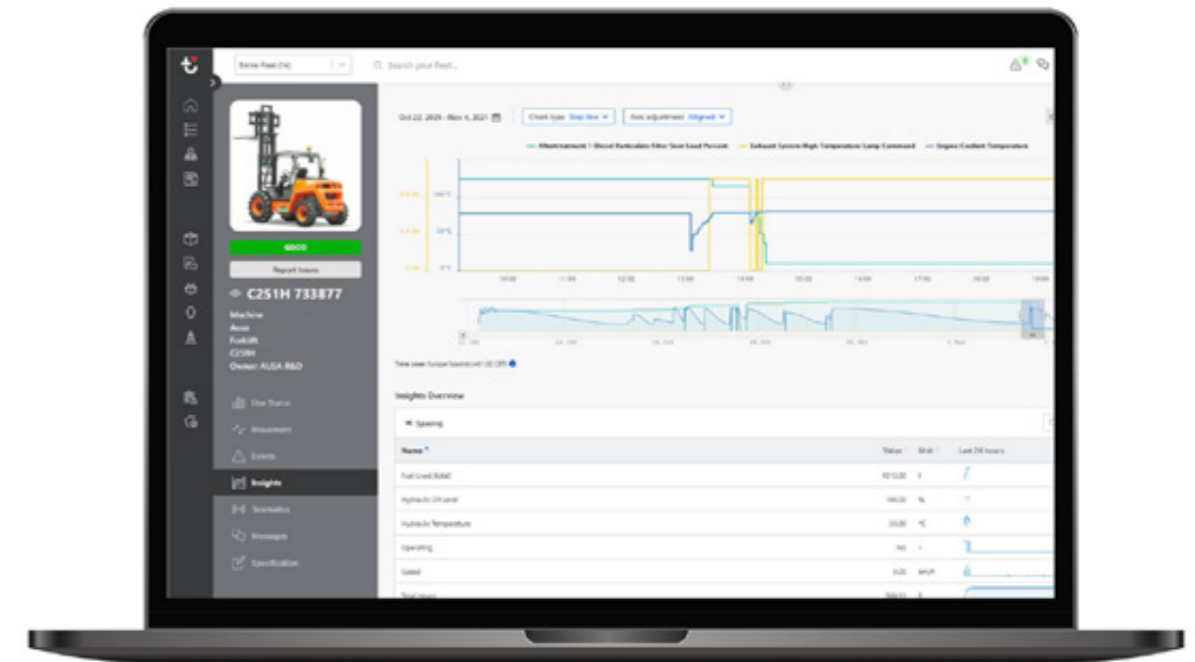
AUSAnow allows you to obtain advanced real-time information about your machine fleet. View advanced charts for customised time periods based on the parameters set by you.



Reduce downtime

AUSAnow connects you to your dealer or rental company, so that any appropriate maintenance can be performed. If you have a problem, AUSAnow provides you with a direct channel of communication with your machine supplier, so that it can be resolved as quickly as possible.

- Preventive alerts
- Attach images



Alarms for your peace of mind

Activate AUSA's recommended maintenance alerts and keep your machines in tip-top condition. And, for your security, you can program geofences and receive alerts if they go outside the established boundaries.

- Customise a schedule
- Set a perimeter

TECHNICAL DATA

TECHNICAL DATA

		C150H	C150Hx4	C201H	C201Hx4
GENERAL					
	UNIT				
Load capacity to 500 mm	kg		1500		2000
Load capacity to 600 mm	kg		1350		1840
Unladen weight *	kg		2700		3635
Transmission	-		Hydrostatic		Hydrostatic
MAST					
Fork carriage	-		FEM IIB		FEM IIB**
Carriage width	mm		1260		1260/1660
ENGINE					
Make	-		KUBOTA		KUBOTA
Model	-		V1505-E4B		D1703-M-DI-E4
Power	kW		18,5		18,5
Operating speed	rpm		2300		2200
Torque	N-m@rpm		92,6@1700		97,4@1500
No. cylinders	-		4		3
Emissions	-		Stage V, Tier 4		Stage V, Tier 4
Noise	dB(A)		103		104
DRIVING					
Max. speed	km/h		20		17
Gradability	%		25	25	40
Traction	-	4x2	4x4 Compen®	4x2	4x4 FullGrip®
Front tyres	-	10.0/75-15.3		10.0/75-15.3	
Rear tyres	-	6.00-9	23x8.5-12	6.00-9	23x8.5-12
HYDRAULIC SYSTEM					
Hydraulic circuit	-	10,6cc and 6cc two gears pump		18cc and 8cc two gears pump	
Flow rate	l/min	22		37	
Working pressure	bar	200		185	
TANK CAPACITY					
Fuel	l	45		62	
Hydraulic	l	40		51	
BRAKES					
Service	-	Sealed. Hydraulic drive		Sealed. Hydraulic drive	
Parking	-	Mechanical drive		Mechanical drive	

* It may change due to optional equipment ** Height measure is different from ISO 2328 standard measure

	C251H	C251Hx4	C351Hx4	C501Hx4
		2500	3500	-
		2275	3230	5000
	4100	4255	5430	7770
	Hydrostatic		Hydrostatic	Hydrostatic
	FEM IIB**		FEM IIB**	FEM IIB**
	1260/1660		1260/1660	1660
	KUBOTA		KUBOTA	DEUTZ
	V2403-CR E5B		V2403-CR E5B	TD 3.6
	31,2		31,2	55
	2200		2200	1800
	159,8@1600		159,8@1600	340@1600
	4		4	4
	Stage V, Tier 4		Stage V, Tier 4	Stage V, Tier 4
	104		104	104
	20		20	20
	25	38	35	35
	4x2	4x4 FullGrip®	4x4 FullGrip®	4x4 FullGrip®
	12.5/80-18		16/70-20	18-19.5
	6.00-9	10.0/75-15.3	12-16.5	12-16.5
	24cc and 8cc two gears pump		24cc and 8cc two gears pump	30cc and 14,6cc two gears pump
	50		50	59
	210		200	235
	62		62	117
	51		51	114
	Sealed. Hydraulic drive			
	Negative brake and electro-hydraulic release			

DIMENSIONS

DIMENSIONS

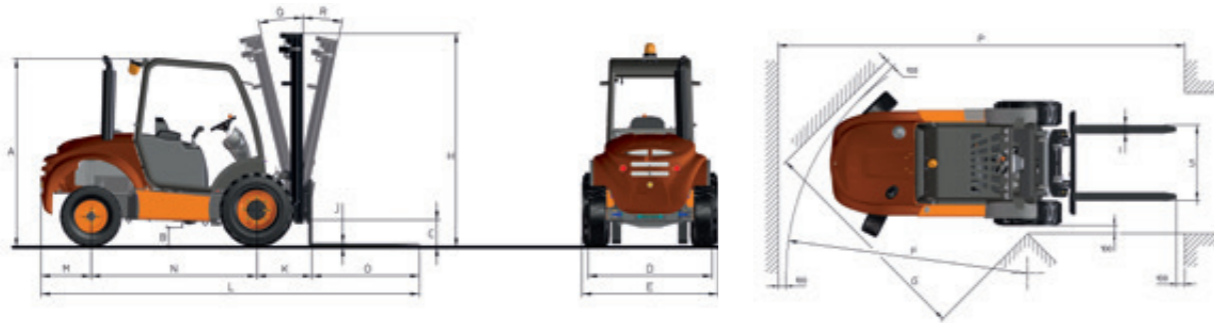
	Maximum lift	C 150 H C 150 Hx4	C 201 H C 201 Hx4	C 251 H C 251 Hx4	C 351 Hx4	C 501 Hx4	C 150 H C 150 Hx4	C 201 H C 201 Hx4	C 251 H C 251 Hx4	C 351 Hx4	C 501 Hx4
DIMENSIONS (mm)		H - RETRACTED MAST HEIGHT (mm)					EXTENDED MAST HEIGHT (mm)				
Duplex mast	2660	2040	-	-	-	-	3290	-	-	-	-
Duplex mast	3300	-	2410	2460	2670	-	-	4170	4220	4570	-
Duplex mast	3700	-	-	-	-	2770	-	-	-	-	4600
Triplex mast	3700	-	2070	2120	2130	-	-	4620	4670	4970	-
Triplex mast	4000	1980	-	-	-	-	4670	-	-	-	-
Triplex mast	4250	-	-	-	-	2370	-	-	-	-	5280
Triplex mast	4300	-	2230	2300	-	-	-	5250	5300	-	-
Triplex mast	5400	-	2610	2690	2700	-	-	6620	6370	6670	-
Triplex mast	5450	-	-	-	-	2770	-	-	-	-	6480

Standard masts in bold

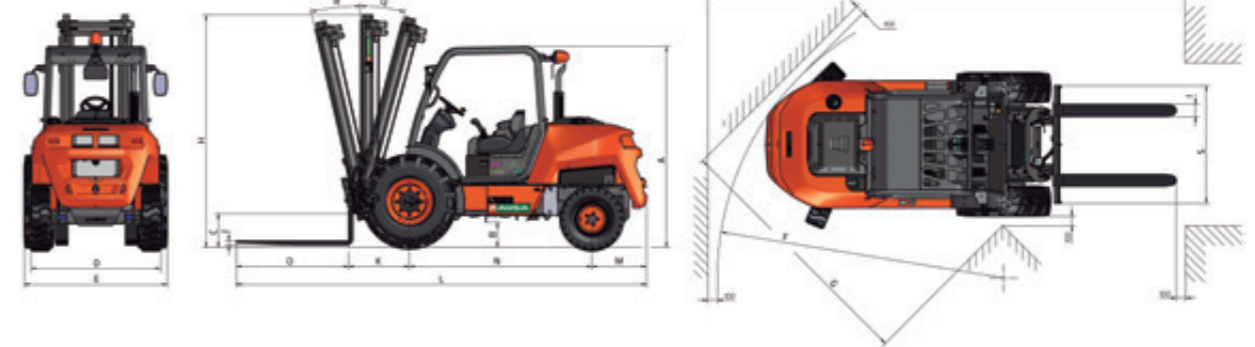
	C 150 H C 150 Hx4	C 201 H C 201 Hx4	C 251 H C 251 Hx4	C 351 Hx4	C 501 Hx4	C 150 H C 150 Hx4	C 201 H C 201 Hx4 Standard axle	C 201 H C 201 Hx4 Wide axle	C 251 H C 251 Hx4 Standard axle	C 251 H C 251 Hx4 Wide axle	C 351 Hx4 Standard axle	C 351 Hx4 Wide axle	C 501 Hx4
FREE LIFT (mm)	0	-	-	-	-	1500	-	-	-	-	-	-	-
-	-	120	120	120	-	-	2000	-	2500	-	3500	-	-
-	-	-	-	-	100	-	-	-	-	-	-	-	5000
-	1130	1130	1200	-	-	2000	-	1740	-	3500	-	-	-
1360	-	-	-	-	-	1200	-	-	-	-	-	-	-
-	-	-	-	-	1390	-	-	-	-	-	-	-	4250
-	1330	1330	-	-	-	-	-	2000	-	2155	-	-	-
-	1680	1680	1680	-	-	-	-	1250	-	1500	-	1400	-
-	-	-	-	-	1790	-	-	-	-	-	-	-	2500

Machines with wide axles for high-lift masts

C 150 H



C 201 - 251 - 351 - 501 H



	C150H	C150Hx4	C201H	C201Hx4
DIMENSIONS (mm)				
A	2000	2040	2090	2090
B	210	240	210	210
C	215	205	310	310
D	1227	1247	1390	1490
E	1300	1300	1520	1520
E*	1300	1300	1780	1780
F	2570	4000	3020	4020
G	2420	2500	2780	2850
I	100	100	100	100
J	35	35	40	40
K	510	510	650	650
L	3630	3630	4380	4380
M	425	390	580	580
N	1710	1740	1950	1950
O	1000	1000	1200	1200
P	4280	5710	5070	6180
S	1260	1260	1260	1260
S**	-	-	1600	1600
DIMENSIONS (°)				
Q	11	11	11	11
R	12	12	12	12

* Measured with high-lift mast installed ** Measured for wide axle carriage

	C251H	C251Hx4	C351Hx4	C501Hx4
	2140	2150	2190	2350
	270	210	320	280
	360	310	375	290
	1390	1490	1645	1760
	1520	1520	1780	2010
	1780	1780	2050	2010
	3020	4120	4350	4410
	2760	2850	3090	3210
	130	100	120	120
	45	40	50	50
	650	650	710	720
	4385	4385	4540	4610
	585	580	615	640
	1950	1950	2020	2050
	1200	1200	1200	1200
	5100	6180	6645	6430
	1260	1260	1310	1660
	1600	1600	1710	-
	11	11	11	11
	12	12	12	12

EQUIPMENT

	C150H C150HX4	C201H C201HX4	C251H C251HX4	C351HX4	C501HX4
DRIVING POSITION					
Tilting cab with assisted lift	●	●	●	●	●
Open FOPS cab	●	●	●	●	●
Semi-closed FOPS cab with front, rear and upper windscreens	○	○	○	○	○
Closed FOPS cab with heating	○	○	○	○	○
Closed FOPS cab with heating and air conditioning			○	○	○
Open ROPS/FOPS cab			○	○	
Semi-closed ROPS/FOPS cab with front, rear and upper windscreens			○	○	
Closed ROPS/FOPS cab with heating			○	○	
Closed ROPS/FOPS cab with heating and air conditioning			○	○	
MASTS					
2.66 m duplex mast	●				
3.30 m duplex mast		●	●	●	
3.70 m duplex mast					●
3.70 m triplex mast		○	○	○	
4.00 m triplex mast	○				
4.25 m triplex mast					○
4.30 m triplex mast with wide shaft		○	○		
5.40 m triplex mast with wide shaft		○	○	○	
5.45 m triplex mast					○
SAFETY					
Seat belt with fasten sensor		●	●	●	●
Seat with operator's presence sensor		●	●	●	●
Rotating beacon	●				
LED rotating beacon		●	●	●	●
Acoustic warning for reverse gear	●	●	●	●	●
Emergency stop	○	●	●	●	●
Hill Holder - hill-start assist			●	●	●
Negative brake		●	●	●	●
Joystick lock					○
Exhaust spark arrestor	○				
LIGHTING AND DRIVING					
Road lights	○				
Road lights with LED daylight		○	○	○	○
Blue spot work lights			○	○	○
Front and rear working lights	○				
Front and rear LED working lights		○	○	○	○
Rear-view mirrors	●	●	●	●	●
Fast reverse speed	○				
COMFORT					
Extra comfort seat, fully adjustable	○	○	○	○	○
Adjustable ergonomic seat	●				
Steering wheel with adjustable tilt and reach		●	●	●	●
All-in-one joystick	●	●	●	●	●
Armrest	●	●	●	●	●

	C150H C150HX4	C201H C201HX4	C251H C251HX4	C351HX4	C501HX4
ADVANCED EQUIPMENT					
Hydrostatic transmission	●	●	●	●	●
Second-generation FullGrip® (4x4)		●	●	●	●
Limited-slip differential on the front axle		●	●	●	●
Inching pedal	●	●	●	●	●
ECO Mode system			●	●	●
Digital display		●	●	●	●
AUSAnow fleet manager	○	○	○	○	○
FORKS					
1,000 mm forks	●				
1,200 mm forks	○	●	●	●	●
2,438 mm forks			○		
1,260 mm type FEM II fork carriage	●	●	●		
1,260 mm type FEM III fork carriage				●	
1,660 mm type FEM IV fork carriage					●
1,200 mm load rest	○				
1,260 mm load rest		○	○	○	
1,660 mm load rest		○	○	○	○
Built-in side shifter	●	●	●	●	●
IMPLEMENTATIONS					
400-litre shovel			○		
420-litre shovel	○				
600-litre shovel			○		
800-litre shovel				○	
1,000-litre shovel				○	
ACCESSORIES					
4th valve for two-way action control	○	○	○	○	○
Load absorber	○	○	○	○	
Reverse gear acoustic warning disable switch	○	○	○	○	○
Acoustic warning for reverse gear with white noise					○
Car radio		○	○	○	○
Waterproof document holder	○	○	○	○	○
Water separator diesel filter	○	○	●	●	●
Air filter with cyclone pre-filter	○	○	○	○	○
Biodegradable hydraulic oil	○		○		
TYRES					
520/50R17 front and 31x15.5-15 rear flotation tyres			○		
PARTS					
Standard front and rear spare wheels	○	○	○	○	○
1,000 h maintenance kit	○	○	○	○	○

● Standard ○ Optional

AUSA
C/ Castelladral 1
08243 Manresa - Barcelona
SPAIN
Tel. +34 93 874 7311
ausa@ausa.com
www.ausa.com

AUSA Spain: +34 91 669 00 06 ausa.madrid@ausa.com
AUSA France: +33 (0) 4 68 54 38 97 - ausa.france@ausa.fr
AUSA U.K.: +44 (0)7703 60 9009 - ausa.uk@ausa.com
AUSA Central Europe: +49 2384 9415725 - kontakt@ausa.com
AUSA U.S.: +1 (310) 426 2305 - ausa.us@ausa.com
AUSA CHINA: +86 10 8598 7386 - ausa.china@ausa.com

Distributor's stamp



www.ausa.com